

**Project:** Rua Nova do Loureiro 43-45, Lisboa

**Report Number:** Laurel - 25

## Construction Progress Report

**Monthly Period Reporting**

Start: Friday, 01 March 2024 End: Sunday, 31 March 2024

**Builder**

LADRILLO S.A - Construção, Remodelações e Projecto

### Current Process

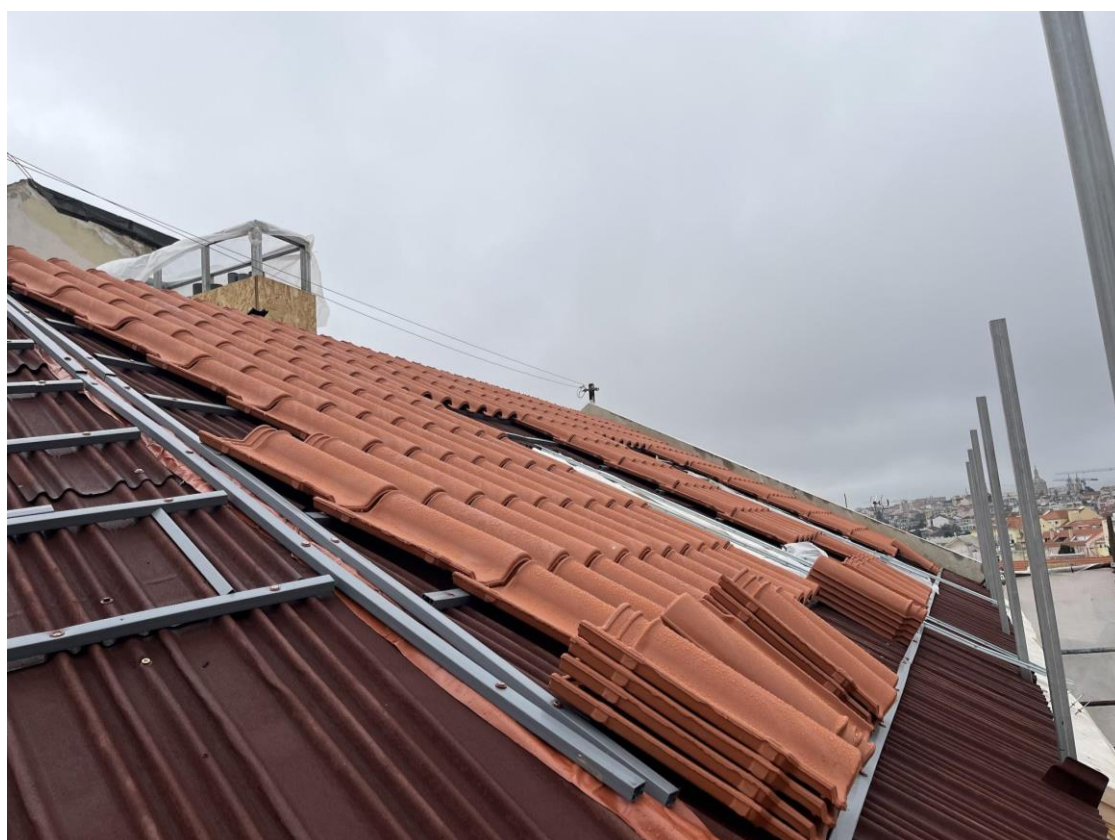
**Description of work**

1. Working on the roof
2. Installing steel structure for mansard window

### Process Photos









**Building upon the progress outlined in the February report, the builders continued their efforts by installing partition walls on the top floor. Concurrently, they commenced work on the zinc roofing and cladding, alongside roof tiling. Additionally, they were in the process of assembling chimney exits on the the roof, connecting exhaust pipes from various sections of the building. With a focus on future maintenance and protection , the FGI engineer requested the installation of roof balustrades by the builders.**







**Following the work undergoing in the preceding report, the construction team diligently completed the assembly of the steel structure for the mansard windows by March. Subsequently, the builders proceeded to install panels for the dormer windows and the facade. Furthermore, they initiated the laying of stone sills for the window framework to enhance both aesthetics and functionality.**